

# BH-250 Series PV DC Isolation Switch



## UL98B

- 1 Brand
- 2 Model
- 3 On Off
- 4 Rated Current
- 5 Nominal Insulation Voltage
- 6 Rated Withstand Voltage
- 7 Utilization Category
- 8 Auxiliary Contact
- 9 Lockable Handle
- 10 Rated Voltage
- 11 Certificate Mark
- 12 Electrical Symbol

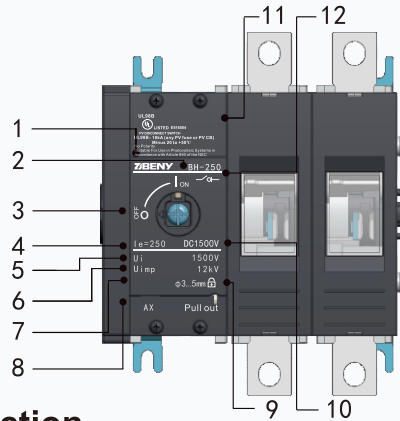


## Application

**ZIBENY** BH-250 DC disconnect switch is designed and developed for solar PV inverter, combiner box or any DC equipments build-in according to UL98B . The DC load break switches provide safety isolation for one DC circuit up to 1500VDC 250 A.

High capacity 10KA for 50ms test and patented DC arc extinguishing chamber ensure fast disconnection and reliable operation for longer working life.

## Appearance Introduction




## Type Instruction

BH	-	250	-	2P	-	250A	-	A	-	AX
↓		↓		↓		↓		↓		↓
Model		Max Current		Pole		Rated Current		Assembling way		Auxiliary contact
PV DC Isolation Switch		250A		2P		250A		<input type="checkbox"/> Blank <input type="checkbox"/> A <input type="checkbox"/> B		<input type="checkbox"/> without <input type="checkbox"/> with

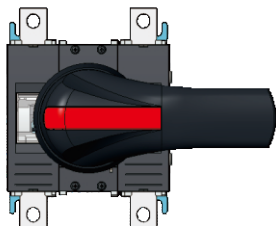
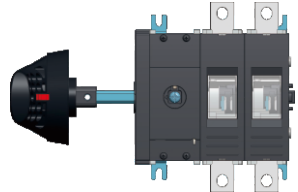
## Parameter

Electrical Characteristics		
Rated Working Voltage	Ue	1500V
Rated Current	Ie	250A
Rated impulse withstand voltage	Uimp	12kV
Rated short-time withstand current	Icw	10kA/50ms
Rated short-circuit making capacity	Icm	10kA/50ms
Rated conditional short-circuit current(kA)		10kA
Installation Environment		
Number of cycles of operation(With current)		400
Number of cycles of operation(Without current)		400
Pole		2
Mounting		Base Screws Mounting
Screws for mounting(M5)		2.0~3.0N.m
Wiring Screw(M8)		acc.IEC 60947-1 10~15N.m
Ambient temperature allowed between		-40°C ~ +80°C
Storage temperature allowed between		-40°C ~ +85°C
Relative Humidity		90%
Pollution degree		3
IP rating terminals		IP20
Outside the ark handle		IP65

## Wiring Graph

Model	Wiring Graph	Ue rated operational voltage DC Volts	Rated operational current	Poles in series	Number of Strings
BH-250-2P 		1500V	250A	1	1
	Example				

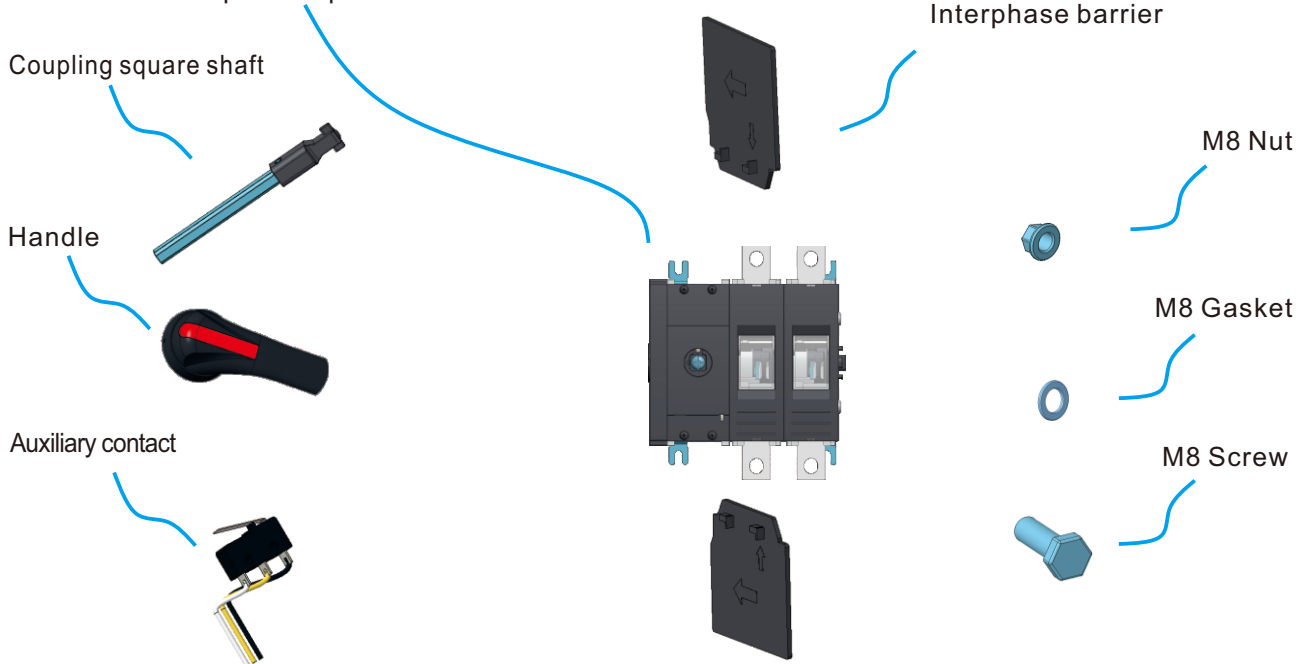
## Product types choosing

BH-250-2P	BH-250-2P-A	BH-250-2P-B
Front operating handle	Front operating handle	Side handle
BH-250-2P 	BH-250-2P-A 	BH-250-2P-B 

## Switches and accessories

BH-250-2P

Front and side operable products



## Accessory

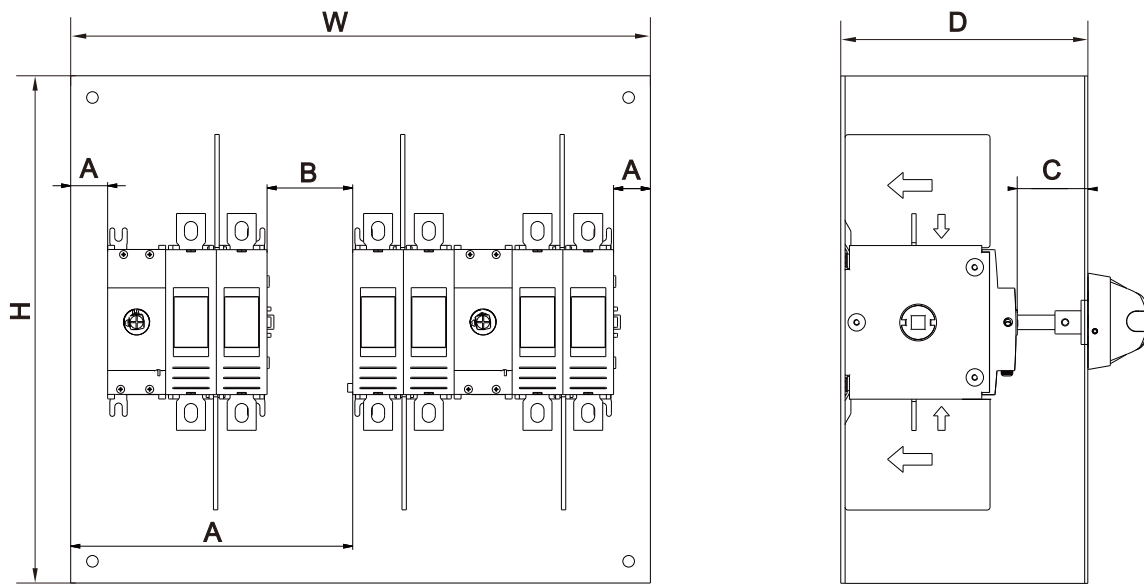
Name	The attachment list
standard configuration	<input checked="" type="checkbox"/> Handle
	<input checked="" type="checkbox"/> Coupling square shaft (The standard length is 182mm)
	<input checked="" type="checkbox"/> Interphase barrier
	<input checked="" type="checkbox"/> M8 Binding kits
	<input checked="" type="checkbox"/> Specification
apolegamy	<input type="checkbox"/> Auxiliary contact
	<input type="checkbox"/> Coupling square shaft Custom length _____ mm

Dimension (mm)

Minimum enclosure dimensions UL98

Dimensions minimum des coffrets UL98B

Dimensiones minimas de las cajas UL98B

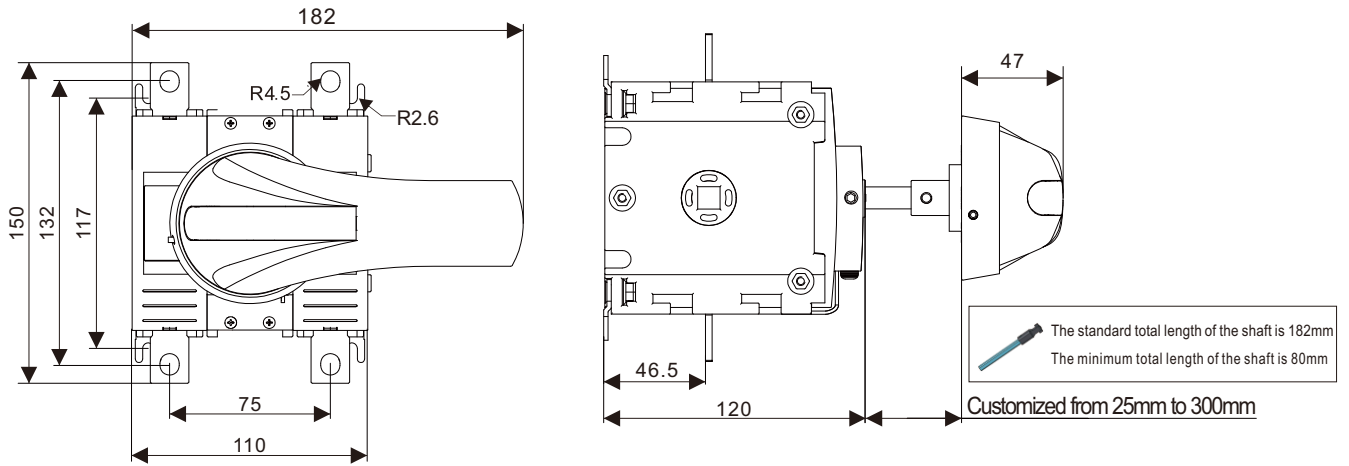


Minimum enclosure size	Size
H × W × D	400mm×350mm×180mm

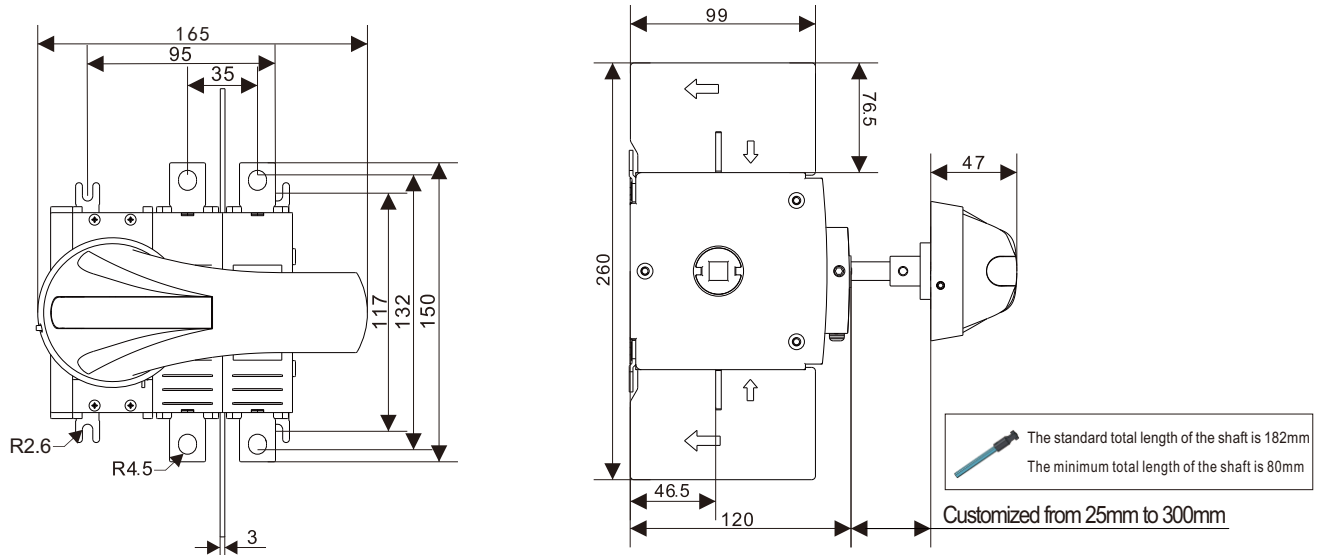
Clearance	Size
A min.	25.4mm
B min.	50.8mm
C min.	22mm

## Dimension (mm)

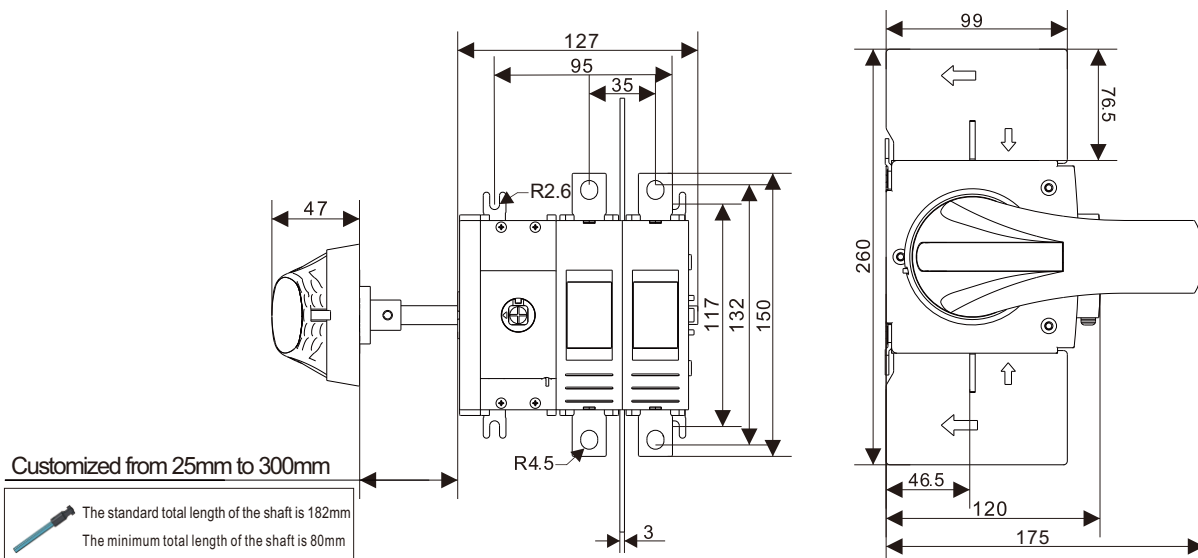
### BH-250-2P



### BH-250-2P-A



### BH-250-2P-B



## Derating data

### Derating Temperature

Type	Tem	-40°C ~ +55°C	+60°C	+65°C	+70°C	+75°C	+80°C
	Current						
BH-250		250A	245A	237.5A	230A	225A	220A

### Derating Altitude

Altitude	2000m	3000m	4000m	5000m
Power frequency withstand voltage	3820VDC	3820VDC	3820VDC	3820VDC
Isolation voltage	1500VDC	1500VDC	1500VDC	1500VDC
Working current	250A	250A	237.5A	230A
Working voltage	N/A			

## Installation and use

Rated current (A)	250A
Section area of copper row mm <sup>2</sup>	120mm <sup>2</sup>

### WARNING Verify that

all connections (including bridging link connections) are suitable for the rated current, prepared to ensure only conductive parts are clamped and tightened to the manufacturers required torque before energization.

### ZHEJIANG BENYI ELECTRICAL CO., LTD

Address: Wenzhou Bridge Industrial Zone,  
Beibaixiang Town, Zhejiang China

TEL: +86-577-5717 7222

FAX: +86-577-5717 7007

Email: benyi@zjbeny.com

Http://www.beny.com

This catalogue has been printed on ecological paper.

Zhejiang Benyi Electrical Co., Ltd. all rights reserved.

If the models and specifications in this product catalogue is changed due to the change of products, we will not inform.



Scan it to ZBENY website!